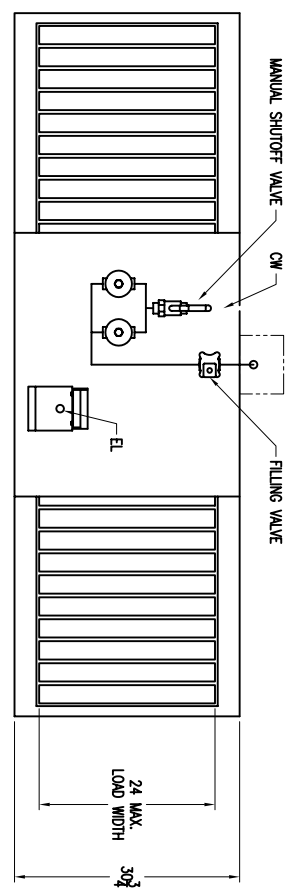
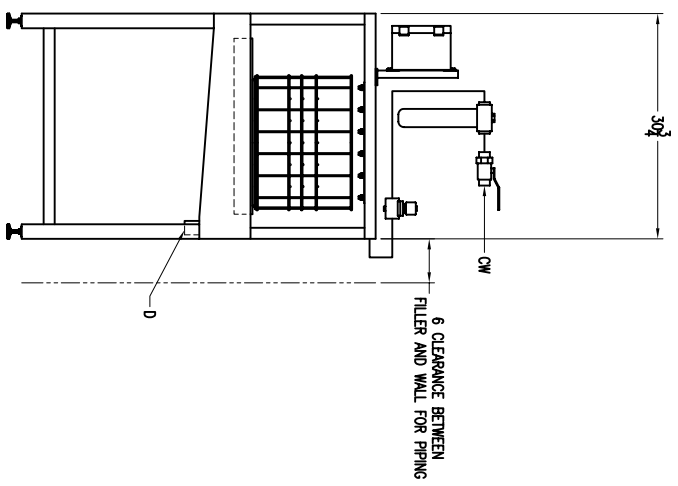
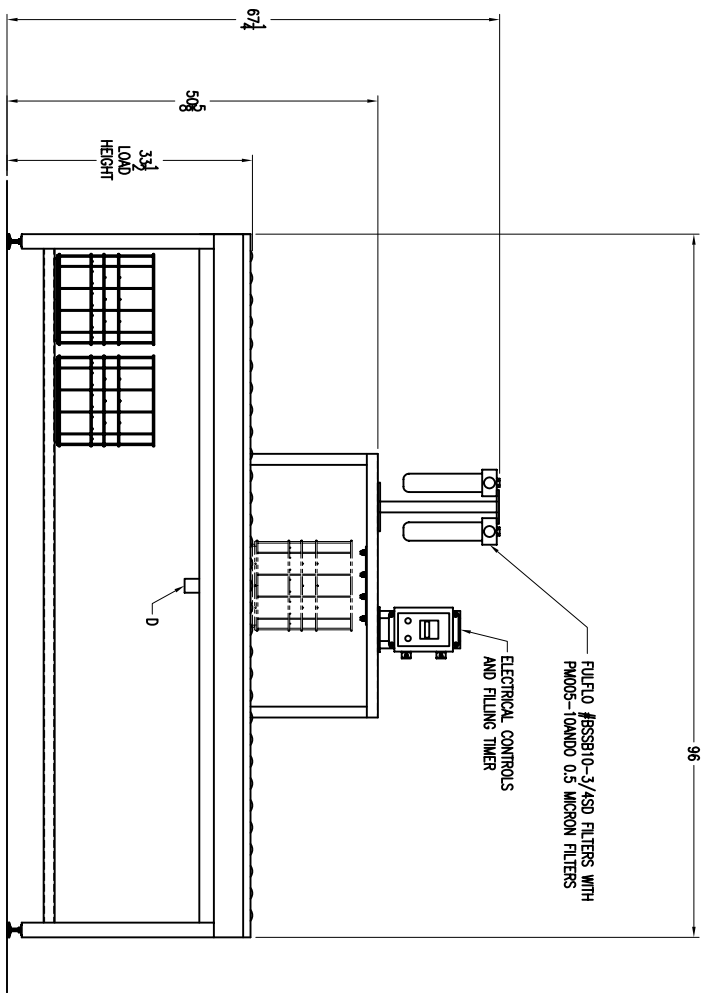


LET	REVISION	DATE	APPR.
A	REDESIGNED PER CUSTOMER REQUEST	9/20/05	AJB



CW - COLD WATER, 3/4" NPT. FEMALE COPPER CONNECTION  
 EL - ELECTRICAL, 120 VA, 60 HZ, 1 PH, 10A.  
 D - DRAIN, 1 1/2" NPT. MALE S/S CONNECTION

**NOTES:**  
 1 - SERVICE CONNECTIONS TO FILLER BY OTHERS.  
 2 - THE FILLER WILL BE SUPPLIED WITH A 10 FT. LONG POWER CORD TERMINATED WITH A STANDARD 120V, - 15 A. MALE PLUG



NOTICE: All drawings, descriptions, prints, specifications, etc. bearing the notice, together with the information, and ideas contained therein, are the sole and exclusive property of Schuyler Machinery. Any reproduction or use thereof without the written permission of Schuyler Machinery is strictly prohibited and will be prosecuted to the full extent of the law.

DWG BY: JSB/RC DATE: 5/31/05 SCALE: 1=12 SHEET: 05 OF 05	DATE: 5/21/05 DWT: MGR NO: MGR ASBL:	DRAWING TITLE: <b>SCHUYLER MACHINERY CO.</b> 206 ONE ST. WILSON NY 14172	PART NO: <b>BF-10001C</b>
---	---	--	------------------------------